

THUNBERGIA

25



Nils Lundqvist

Fungi Fimicolae Exsiccati

Fasc. 4 & 5 (Nos 76 - 125)

THUNBERGIA is the continuation of 'Publications from the Herbarium, University of Uppsala', of which 19 numbers were issued between 1978 and 1986. The name is given in memory of Carl Peter Thunberg (1743–1828), a disciple of Linnaeus and a famous traveller to South Africa and Japan. His collections, about twentyseven thousand sheets, were transferred to our University in 1785, and became the foundation of the Botanical Museum. Thunberg succeeded Linnaeus filius as professor in 1785 and held the professorship to his death.

Thunbergia is issued irregularly and distributed on exchange basis or by order to the address below.

Contributions are refereed by external specialists.

Editor: Roland Moberg

Botanical Museum (Fytoteket)
Uppsala University
Villavägen 6
S-752 36 Uppsala, Sweden
Fax: +46 18 50 87 02
E-mail: fytoorm@fyto.uu.se

THUNBERGIA 25

Fungi Fimicolae Exsiccati

Fascicle 4 & 5

Nils Lundqvist

UPPSALA 1997

Distributor: Botanical Museum, Uppsala University

Fungi Fimicolae Exsiccati. Fascicles 4 & 5

Nils Lundqvist

Lundqvist, N. 1996. Fungi Fimicolae Exsiccati. Fascicles 4 & 5 (Nos 76–125). – Thunbergia 25: 1–29. ISSN-0283-2275.

Fasc. 4–5 contain pyrenomycetes in a broad sense mainly from Sweden, but also from Iceland, Estonia, Hungary, Tenerife, Madeira, Kenya, Tanzania, Australia, New Zealand and Chile. *Cercophora aggregata* is described as new to science, and *Schizothecium curvuloides* is a new combination. *Sporormiella lageniformis* is lectotypified and discussed. Nos 76, 77, 78, 80, 81, 83 and 100 are new country records. An additional Swedish record of *Arnimium cirriferum* is commented upon under No. 84. Corrections to Fasc. 3 are included.

Nils Lundqvist, Mårdvägen 8, Storvreta, S-74340, Sweden.

N. LUNDQVIST: FUNGI FIMICOLAE EXSICCATI

76. *Aphanoascus canadensis* Currah

Mycotaxon 24:139, 1985

SWEDEN. Blekinge Prov., Åryd par., Tjärö Island. 56°10'N 15°02'E.

On fox dung (*Vulpes vulpes*) in moist chamber.

14–27.VI.1963

leg. Ingvar Nordin (no. 1871-d)

det. R. S. Currah 1993

Note. New to Sweden.

N. LUNDQVIST: FUNGI FIMICOLAE EXSICCATI

77. *Arnium leporinum* (Cain) N.Lundq. & Krug

Symb. Bot. Upsal. 20(1): 234, 1972. – *Sordaria leporina* Cain, Univ. Toronto Stud., Biol. Ser. 38: 30, 1934.

ESTONIA. Pärnumaa Prov., Pärnu par., Nigula Bog State Nature Reserve, just outside the N border, Mäeküla (38 km SSE of Pärnu). 58°57'N 23°48'E. Deciduous forest with spruce.

On hare dung (*Lepus*) in moist chamber.

27.VIII.1989 leg. Nils Lundqvist (no. 18080-c)

Note. New to Balticum.

N. LUNDQVIST: FUNGI FIMICOLAE EXSICCATI

78. *Cercophora aggregata* N.Lundq. Isotype

Thunbergia 25: 26, 1996.

SWEDEN. Medelpad Prov., Borgsjö par., Borgsjö. 62°33'N 15°55'E.

On horse dung.

30.VIII.1993 leg. Nils Lundqvist (no. 19682)

Note. See description on p. 26.

N. LUNDQVIST: FUNGI FIMICOLAE EXSICCATI

79. *Cercophora coprophila* (Fr.:Fr.) N.Lundq.

Symb. Bot. Upsal. 20(1):95, 1972. – *Sphaeria coprophila* Fr., Mykol. Hefte 2: 38, 1823; Syst. Mycol. 2: 342, 1823. – For further synonyms, see Lundqvist in op. cit.

SWEDEN. Gotland Prov., Tingstäde par., the gunnery range at Smiss (2 km ENE of the church). 57°46'N 18°33'E. In mixed forest.

On old cow dung.

21.IX.1990 leg. Nils Lundqvist (no. 18482)

N. LUNDQVIST: FUNGI FIMICOLAE EXSICCATI

80. *Cercophora silvatica* N.Lundq.

Symb. Bot. Upsal. 20(1): 103, 1972

ESTONIA. Pärnumaa Prov., Pärnu par., Nigula Bog State Nature Reserve, just outside the N border, Mäeküla (38 km SSE of Pärnu). 58°57'N 23°48'E. Deciduous forest with spruce.

On hare dung (*Lepus*) in moist chamber.

27.VIII.1989 leg. Nils Lundqvist (no. 18080-b)

Note. New to Balticum, new substrate.

N. LUNDQVIST: FUNGI FIMICOLAE EXSICCATI

81. *Cercophora silvatica* N.Lundq.

Symb. Bot. Upsal. 20(1): 103, 1972

CHINA. Sichuan Prov., Jiu Zhai Gou, Yuanshi Senlin. 33°17'N 103°55'E. Alt. 3300 m. In primeval coniferous forest.

On deer dung (*Cervus elaphus?*) in moist chamber.

21.V.1989 leg. Thor-Björn Engelmark
det. Nils Lundqvist

Note. New to China and probably to whole Asia.

N. LUNDQVIST: FUNGI FIMICOLAE EXSICCATI

82. *Cercophora silvatica* N.Lundq.

Symb. Bot. Upsal. 20(1): 103, 1972

CHINA. Sichuan Prov., Jiu Zhai Gou, Yuanshi Senlin. 33°17'N 103°55'E.
Alt. 3300 m. In primeval forest.

On deer dung (*Cervus albirostris?*) in moist chamber.

21.V.1989

leg. Thor-Björn Engelmark
det. Nils Lundqvist

Note. A duplicate also in PC.

N. LUNDQVIST: FUNGI FIMICOLAE EXSICCATI

83. *Fimetariella microsperma* Krug

Can. J. Bot. 73: 1911, 1995

CANARY ISLANDS. Tenerife, Paso (9 km NNE of Santa Cruz). 28°33'N
16°14'W. In the *Erica* zone.

On goat dung in moist chamber.

23.I.1973

leg. Nils Lundqvist (no. 8223-a)

Note. New to Canary Islands. These specimens have slightly smaller spores (11–13 x 7–8 µm) than those described by Krug (12–14 x 7.5–9 µm), and in some spores two minor, "apical" pores instead of one were observed. In one of the collections cited by Krug (Lqt 4436-a), I could see up to three such pores. I consider these features to be a natural variation in the species.

N. LUNDQVIST: FUNGI FIMICOLAE EXSICCATI

84. *Podospora dasypogon* N.Lundq.

Symb. Bot. Upsal. 20(1): 157, 1972

SWEDEN. Öland Prov., Böda par., northern cape near the lighthouse.
57°15'N 17°03'E. In seashore pasture.

On cow dung in moist chamber.

1.VII.1995

leg. Nils Lundqvist (no. 20170-b)

Note. On this dung gathering *Arnium cirriferum* (Speq.) Krug & Cain was also found, which is a remarkable new record (Lqt 20170-c in S). The nearest finds are Mediterranean, and the known world distribution of the species is more or less tied to such regions.

N. LUNDQVIST: FUNGI FIMICOLAE EXSICCATI

85. *Podospora excentrica* N.Lundq.

Symb. Bot. Upsal. 20(1): 176, 1972

MADEIRA. 10 km NNW of Funchal on the road to Pico Arieiro. 32°43'N
16°55'W. Alt. 1600 m. Montane pasture with shrubs.

On sheep dung in moist chamber.

30.V.1994

leg. Nils Lundqvist (no. 19818-a)

N. LUNDQVIST: FUNGI FIMICOLAE EXSICCATI

86. Roumegueriella rufula (Berk. & Br.) Mall. & Cain

Can. J. Bot. 50: 64, 1972. – *Chaetomium rufulum* Berk. & Br., Ann. Mag. Nat. Hist., 4 Ser., 11: 348, 1873. – *Eurotium insigne* Winter in Rabenhorst, Kryptogamen-Flora von Deutschland, Oesterreich und der Schweiz, 2 Auflage, I: Pilze p. 61, 1884. – For further synonyms, see Malloch & Cain in op. cit.

SWEDEN. Öland Prov., Resmo par., near the fen Möckelmossen on Stora Alvaret. 56°33'N 16°26'E. Limestone heath with *Potentilla fruticosa*.

On partridge dung (*Perdix perdix*).

13.V.1991 leg. Nils Lundqvist (no. 18583-f)

Note. There are only two finds of this species in Sweden.

N. LUNDQVIST: FUNGI FIMICOLAE EXSICCATI

87. Schizothecium aloides (Fuckel) N.Lundq.

Symb. Bot. Upsal. 20(1): 253, 1972. – *Sordaria aloides* Fuckel, Jahrb. Nass. Ver. Naturk. 27/28: 43, 1873. – *Sphaeria valsoides* Peck, 28th Ann. Rep. New York State Mus. Nat. Hist. (1876): 79, 1879. – *Sordaria coronifera* Grove, J. Bot. 54: 186, 1916.

SWEDEN. Jämtland Prov., Hackås par., Östnär. 62°54'N 14°31'E. In pasture.

On old cow dung in moist chamber.

16.VI.1962 leg. Nils Lundqvist (no. 3414-e)

N. LUNDQVIST: FUNGI FIMICOLAE EXSICCATI

88. Schizothecium aloides (Fuckel) N.Lundq.

Symb. Bot. Upsal. 20(1): 253, 1972. – *Sordaria aloides* Fuckel, Jahrb. Nass. Ver. Naturk. 27/28: 43, 1873. – *Sphaeria valsoides* Peck, 28th Ann. Rep. New York State Mus. Nat. Hist. (1876): 79, 1879. – *Sordaria coronifera* Grove, J. Bot. 54: 186, 1916.

SWEDEN. Uppland Prov., Nysätra par., W of Sjövik at lake Alstasjön. 59°44'N 17°15'E. In pasture.

On old cow dung in moist chamber.

20.X.1962 leg. Nils Lundqvist (no. 3798-c)

N. LUNDQVIST: FUNGI FIMICOLAE EXSICCATI

89. Schizothecium cervinum (Cain) N.Lundq.

Symb. Bot. Upsal. 20(1): 253, 1972. – *Sordaria cervina* Cain, Univ. Toronto Stud., Biol. Ser. 38: 36, 1934.

SWEDEN. Uppland Prov., Ärentuna par., SE of Storvreta. 59°57'N 17°36'E. In mixed forest.

On elk dung (*Alces alces*) in moist chamber.

24.III.1993 leg. Nils Lundqvist (no. 19414-b)

N. LUNDQVIST: FUNGI FIMICOLAE EXSICCATI

90. Schizothecium conicum (Fuckel) N.Lundq.

Symb. Bot. Upsal. 20(1): 253, 1972. – *Cercophora conica* Fuckel, Jahrb. Nass. Ver. Naturk. 23/24: 245, 1870. – *Sordaria curvula* De Bary ex Winter, nom. illeg., Bot. Zeit. 31: 485, 1873. – *Sordaria pseudominuta* Speg., Bol. Acad. Nac. Cienc. Córdoba 11: 189, 1887. – *Sordaria hispidula* Speg., Anal. Mus. Nac. Buenos Aires 6: 255, 1899. – *Schizothecium hispidulum* (Speg.) N.Lundq., Symb. Bot. Upsal. 20(1): 254, 1972.

SWEDEN. Dalarna Prov., Malung par., 3 km NE of Lisskogsåsen. 60°31'N 13°30'E. In a clearing in coniferous forest.

On cow dung in moist chamber.

6.VII.1959 leg. Nils Lundqvist (no. 2182-c)

Note. The spores of *S. hispidula*, measured on the type (LPS 6836), are 24–27 x 12–13 µm and fall thus within the size range of *S. conicum* spores. However, the circumscription of the taxon is still problematic because of a great variation in perithecial vestiture, spore size and arrangement of the spores in the ascus.

N. LUNDQVIST: FUNGI FIMICOLAE EXSICCATI

91. Schizothecium conicum (Fuckel) N.Lundq.

Symb. Bot. Upsal. 20(1): 253, 1972. – *Cercophora conica* Fuckel, Jahrb. Nass. Ver. Naturk. 23/24: 245, 1870. – For further synonyms, see No. 90 and Lundqvist op. cit.

SWEDEN. Småland Prov., Ölmstad par., Gunneryd. 57°56'N 14°19'E.

On cow dung in moist chamber.

9.VI.1962 leg. Nils Lundqvist (no. 3375-b)

Note. See comment on No. 90.

N. LUNDQVIST: FUNGI FIMICOLAE EXSICCATI

92. Schizothecium conicum (Fuckel) N.Lundq.

Symb. Bot. Upsal. 20(1): 253, 1972. – *Cercophora conica* Fuckel, Jahrb. Nass. Ver. Naturk. 23/24: 245, 1870. – For further synonyms, see No. 90 and Lundqvist op. cit.

SWEDEN. Uppland Prov., Uppsala par., Marieberg. In pasture. 59°52'N 17°38'E.

On sheep dung in moist chamber.

23.VII.1964 leg. Nils Lundqvist (no. 4302-g)

Note. See comment on No. 90.

N. LUNDQVIST: FUNGI FIMICOLAE EXSICCATI

93. Schizothecium conicum (Fuckel) N.Lundq.

Symb. Bot. Upsal. 20(1): 253, 1972. – *Cercophora conicum* Fuckel, Jahrb. Nass. Ver. Naturk. 23/24: 245, 1870. – For further synonyms, see No. 90 and Lundqvist op. cit.

ICELAND. Suður-Island, Rangarvallasýsla, Fljótshlíð, Stora-Dimon. 63°40'N 19°57'W. In pasture

On cow dung in moist chamber

24.VII.1971 leg. Nils Lundqvist (no. 6972-b)

Note. See comments on No. 90

N. LUNDQVIST: FUNGI FIMICOLAE EXSICCATI

94. *Schizothecium curvuloides* (Cain) N.Lundq. n. comb.

Basionym: *Podospora curvuloides* Cain, Can. J. Bot. 40: 453, 1962.

NEW ZEALAND: South Island, Canterbury, Banks Peninsula (exact locality not known).

On sheep dung in moist chamber.

1.I.1981

leg. Leif Tibell
det. Nils Lundqvist

Note. These specimens are very large-spored (47–55 x 24–31 μm) compared with those described by Cain (31–41 x 17–20 μm), and were with other samples from Australia and New Zealand provisorily filed as a new species. Young spores may show a faint, transverse striation unique to the genus, and the spore size in all this material varies considerably. A. Bell & D.P. Mahoney (Mycologia 87: 3, 1995) have investigated known collections, incl. the type of *P. curvuloides*, and come to the conclusion that only one, variable taxon is involved.

N. LUNDQVIST: FUNGI FIMICOLAE EXSICCATI

95. *Schizothecium vesticola* (Berk. & Br.) N.Lundq.

Symb. Bot. Upsal. 20(1): 256, 1972. – *Sphaeria vesticola* Berk. & Br., Ann. Mag. Nat. Hist., Ser. 3, 3: 370, 1859. – *Sordaria minuta* Fuckel, Jahrb. Nass. Ver. Naturk. 27/28: 44, 1873.

SWEDEN. Jämtland Prov., Fors par., Kilen. 63°01'N 16°36'E. In coniferous forest.

On horse dung in moist chamber.

14.VI.1962

leg. Nils Lundqvist (no. 3388-a)

N. LUNDQVIST: FUNGI FIMICOLAE EXSICCATI

96. *Schizothecium vesticola* (Berk. & Br.) N.Lundq.

Symb. Bot. Upsal. 20(1) 256, 1972. – *Sphaeria vesticola* Berk. & Br., Ann. Mag. Nat. Hist. Ser. 3, 3: 370, 1859. – *Sordaria minuta* Fuckel, Jahrb. Nass. Ver. Naturk. 27/28: 44, 1873.

ICELAND. Norður-Island, Norður-Þingeyjarsýsla, Klaufaskurður, 3 km SSE of Grimsstaðir. 65°33'N 16°06'W.

On sheep dung.

29.VII.1971

leg. Nils Lundqvist (no. 7098-b)

N. LUNDQVIST: FUNGI FIMICOLAE EXSICCATI

97. *Schizothecium vesticola* (Berk. & Br.) N.Lundq.

Symb. Bot. Upsal. 20(1) 256, 1972. – *Sphaeria vesticola* Berk. & Br., Ann. Mag. Nat. Hist. Ser. 3, 3: 370, 1859. – *Sordaria minuta* Fuckel, Jahrb. Nass. Ver. Naturk. 27/28: 44, 1873.

CHILE. Magellanes Prov., Isla Navarino, 2 km SE of Puerto Eugenia (20 km E of Puerto Williams). 54°57'S 67°41'W. In *Nothofagus pumilio/betuloides* forest.

On cow dung in moist chamber.

21.I.1989

leg. Leif Tibell (no. 17964-c)
det. Nils Lundqvist

Note. The spores are 21–23 x 10.5–11.5 μm and thus somewhat larger than in typical *Schizothecium vesticola*.

N. LUNDQVIST: FUNGI FIMICOLAE EXSICCATI

98. Schizothecium vesticola (Berk. & Br.) N.Lundq.

Symb. Bot. Upsal. 20(1) 256, 1972. – *Sphaeria vesticola* Berk. & Br., Ann. Mag. Nat. Hist. Ser. 3, 3: 370, 1859. – *Sordaria minuta* Fuckel, Jahrb. Nass. Ver. Naturk. 27/28: 44, 1873.

SWEDEN. Öland Prov., Resmo par., at the fen Möckelmossen on Stora Alvaret. 56°33'N 16°26'E. Limestone heath with *Potentilla fruticosa*.

On sheep dung in moist chamber.

6.VI.1964 leg. Ingvar Nordin (no. 2436-q)
det. Nils Lundqvist

N. LUNDQVIST: FUNGI FIMICOLAE EXSICCATI

99. Sordaria alcina N.Lundq.

Symb. Bot. Upsal. 20(1): 326, 1972.

SWEDEN. Dalarna Prov., Orsa par., 1 km S of Ljothed at Nissänget (5 km NW of Skattungbyn). 61°13'N 14°47'E. In pine forest.

On elk dung (*Alces alces*) in moist chamber.

10.VII.1993 leg. Nils Lundqvist (no. 19528-b)

N. LUNDQVIST: FUNGI FIMICOLAE EXSICCATI

100. Sordaria arctica Cain

Can. J. Bot. 35: 262, 1957.

CANARY ISLANDS. Tenerife, Mt Teide, above Portillo. 28°17'N 16°39'W. In the *Spartocytisus* zone.

On rabbit? dung (*Oryctolagus cuniculus*) in moist chamber.

24.I.1973 leg. Nils Lundqvist (no. 8233-a)

Note. The species is earlier known from arctic North America on carnivore dung and also from Japan. The find from Tenerife is surprising as the substrate is rabbit dung, and the fungus expected to turn up there should have been *Sordaria tenerifae* (Arx & Guarro) Krug & Khan, which is very similar. However, the spores of No. 8233-a measure 16.5–17.5 x 14–15 µm, thus matching those of *S. arctica* in the original diagnosis (15–18 x 13–15 µm), whereas *S. tenerifae* has a spore size of 17–21 x 14–18 µm.

N. LUNDQVIST: FUNGI FIMICOLAE EXSICCATI

101. Sordaria brevicollis L.S. Olive & Fantini

Amer. J. Bot. 48: 124, 1961

KENYA. Central Prov., Thika Distr., 5 km WSW of Thika at B. Harris Farm. 1°03'S 37°05'E. Savanna with shrubs.

On dung of bush duiker (*Sylvicapra grimmia*) in moist chamber.

24.I.1970 leg. Nils Lundqvist (no. 6651-a)

Note. Duiker dung is a new substrate record for the species.

N. LUNDQVIST: FUNGI FIMICOLAE EXSICCATI

102. *Sordaria fimicola* (Rob.) Ces. & De Not.

Comm. Soc. Critt. Ital. 1: 226, 1863. – *Sphaeria fimicola* Rob. in Desm., Ann. Sci. Nat., 3 Sér., Bot. 11: 353, 1849. – For further synonyms, see N. Lundqvist in Symb. Bot. Upsal. 20(1): 304, 1972.

TANZANIA. Kilimanjaro Prov., Moshi Distr., Mt. Kilimanjaro, Shira Plateau. 3°04'S 37°22'E. Alt. 3500 m. At a bog.

On dung of bush duiker (*Sylvicapra grimmia*) in moist chamber.

13.I.1970 leg. Nils Lundqvist (no. 6408-a)

Note. Duiker dung is a new substrate record for the species.

N. LUNDQVIST: FUNGI FIMICOLAE EXSICCATI

103. *Sordaria fimicola* (Rob.) Ces. & De Not.

Comm. Soc. Critt., Ital. 1: 226, 1863. – *Sphaeria fimicola* Rob. in Desm., Ann. Sci. Nat., 3 Sér., Bot. 11: 353, 1849. – For further synonyms, see N. Lundqvist in Symb. Bot. Upsal. 20(1): 304, 1972.

TANZANIA. Arusha Prov., Arusha Distr., Ngurdoto National Park, Lake Kusare. 3°15'S 36°55'E. On the shore.

On hare dung (*Lepus* sp.) in moist chamber.

16.I.1970 leg. Nils Lundqvist (no. 6456-b)

N. LUNDQVIST: FUNGI FIMICOLAE EXSICCATI

104. *Sordaria fimicola* (Rob.) Ces. & De Not.

Comm. Soc. Critt., Ital. 1: 226, 1863. – *Sphaeria fimicola* Rob. in Desm., Ann. Sci. Nat., 3 Sér., Bot. 11: 353, 1849. – For further synonyms, see N. Lundqvist in Symb. Bot. Upsal. 20(1): 304, 1972.

SWEDEN. Uppland Prov., Vassunda par., NE of Ragnhildsvik. 59°42'N 17°43'E. In mixed forest.

On elk dung (*Alces alces*) in moist chamber.

26.III.1961 leg. Ingvar Nordin (no. 269-a)
det. Nils Lundqvist

N. LUNDQVIST: FUNGI FIMICOLAE EXSICCATI

105. *Sordaria fimicola* (Rob.) Ces. & De Not.

Comm. Soc. Critt., Ital. 1: 226, 1863. – *Sphaeria fimicola* Rob. in Desm., Ann. Sci. Nat., 3 Sér., Bot. 11: 353, 1849. – For further synonyms, see N. Lundqvist in Symb. Bot. Upsal. 20(1): 304, 1972.

SWEDEN. Västmanland Prov., Lundby par., the bathing place at Johannisberg S of Västerås. 59°35'N 16°31'E.

On hare dung (*Lepus* sp.) in moist chamber.

27.VII.1965 leg. Ingvar Nordin (no. 3474)
det. Nils Lundqvist

N. LUNDQVIST: FUNGI FIMICOLAE EXSICCATI

106. *Sordaria macrospora* Auersw.

in Rabenh., Fungi Eur. Exs. 954, 1866; Hedwigia 5: 192, 1866

SWEDEN. Blekinge Prov., Torhamn par., Sibbaboda. 56°08'N 15°53'E. In sandfield.

On rabbit dung (*Oryctolagus cuniculus*) in moist chamber.

30.VII.1981 leg. Nils Lundqvist (no. 13390-n)

N. LUNDQVIST: FUNGI FIMICOLAE EXSICCATI

107. *Sordaria macrospora* Auersw.

in Rabenh. Fungi Eur. Exs. 954, 1866; Hedwigia 5: 192, 1866

AUSTRALIA. Tasmania, 10 km ESE of Huonville, Snug Plains. 43°05'S
147°10'E. Open, shrubby area.

On rabbit? dung (*Oryctolagus cuniculus*) in moist chamber. Single spore
culture on CmA + PDA.

8.III.1981 leg. Leif Tibell (no. 11285-a)
det. Nils Lundqvist

Note. This may be the second known find of the species from Australia. L.A. Nagy &
K.M. Harrower have earlier reported it on kangaroo dung from Canberra (Trans. Brit.
mycol. Soc. 72:1, 1979).

N. LUNDQVIST: FUNGI FIMICOLAE EXSICCATI

108. *Sordaria superba* De Not.

Comm. Soc. Critt. Ital. 2: 479, 1867. – *Hypocopra superba* (De Not.) Sacc., Syll. Fung.
1: 241, 1882. – *Pleurage superba* (De Not.) O. Kuntze, Rev. Gen. Plant. 3(2): 505, 1898.

SWEDEN. Skåne Prov., Södra Mellby par., S of Stenshuvud. 55°40'N
14°17'E.

On rabbit dung (*Oryctolagus cuniculus*) in moist chamber.

10.V.1961 leg. Nils Lundqvist (no. 2861-a)

N. LUNDQVIST: FUNGI FIMICOLAE EXSICCATI

109. *Sordaria superba* De Not.

Comm. Soc. Critt. Ital. 2: 479, 1867. – *Hypocopra superba* (De Not.) Sacc., Syll. Fung.
1: 241, 1882. – *Pleurage superba* (De Not.) O. Kuntze, Rev. Gen. Plant. 3(2): 505, 1898.

SWEDEN. Gotland Prov., Fårö par., Gotska Sandön Island, ENE of the
lighthouse. 58°23'N 19°16'E.

On dung of blue hare (*Lepus timidus*) in moist chamber.

8.VII.1964 leg. Leif Tibell (no. 2201-d)
det. Nils Lundqvist

N. LUNDQVIST: FUNGI FIMICOLAE EXSICCATI

110. *Delitschia marchalii* Berl. & Vogl.

in Sacc., Syll. Fung. Addit. p. 127, 1886

SWEDEN. Torne Lappmark, Jukkasjärvi par., Kopparåsen (13 km NW of
Abisko). 68°25'N 18°29'E. Alt. 900 m. In middle alpine zone.

On reindeer dung (*Rangifer tarandus*) in moist chamber.

9.VIII.1960 leg. Nils Lundqvist (no. 2743-a)

Note. *D. marchalii* is an odd member in the genus. In water its asci burst rapidly
releasing a row of spores adhering to one another by swelling sheaths. The ascus wall
becomes then very difficult to discern and seems partly to dissolve. The species should
be transferred to a genus of its own.

N. LUNDQVIST: FUNGI FIMICOLAE EXSICCATI

111. *Delitschia marchalii* Berl. & Vogl.

in Sacc., Syll. Fung. Addit. p. 127, 1886

SWEDEN. Västmanland Prov., Ängsö par., near the Castle. 59°32'N
16°51'E.

On roe dung (*Capreolus capreolus*) in moist chamber.

21.V.1969 leg. Nils Lundqvist (no. 6258-b)

Note. See note on No. 110.

N. LUNDQVIST: FUNGI FIMICOLAE EXSICCATI

112. *Sporormiella irregularis* (Egel.) Ahmed & Cain

Can. J. Bot. 50: 444, 1972. – *Sporormia irregularis* Egel., Nytt Mag. Bot. 16: 218, 1969.
– *Preussia irregularis* (Egel.) Solans, Bol. Soc. Micol. Castellana 9: 33, 1985.

SWEDEN. Småland Prov., Vrigstad par., 2 km WNW of Boda. 57°21'N
14°28'E.

On old cow dung in moist chamber.

6.VI.1960 leg. Nils Lundqvist (no. 2374-a)

N. LUNDQVIST: FUNGI FIMICOLAE EXSICCATI

113. *Sporormiella lageniformis* (Fuckel) Ahmed & Cain

Can. J. bot. 50: 446, 1972. – *Sporormia lageniformis* Fuckel, Jahrb. Nass. Ver. Naturk. 23/24: 242, 1870. – *Preussia lageniformis* (Fuckel) Valld. & Guarro, Bot. Soc. Micol. Madrid 14: 92, 1990, comb. inval. – *Sporormia ambigua* Niessl, Oesterr. Bot. Zeitschr. 28: 97, 1878. – *Preussia ambigua* (Niessl) Ahmad, Mon. Biol. Soc. Pakistan 8: 47, 1978.

SWEDEN. Södermanland Prov., Dunker par., Götarstorp. 59°10'N
16°47'E.

On horse dung in moist chamber.

4.VI.1962 leg. Nils Lundqvist (no. 3338-a)

Note. See p. 28

N. LUNDQVIST: FUNGI FIMICOLAE EXSICCATI

114. *Sporormiella lageniformis* (Fuckel) Ahmed & Cain

Can. J. bot. 50: 446, 1972. – *Sporormia lageniformis* Fuckel, Jahrb. Nass. Ver. Naturk. 23/24: 242, 1870. – *Preussia lageniformis* (Fuckel) Valld. & Guarro, Bot. Soc. Micol. Madrid 14: 92, 1990, comb. inval. – *Sporormia ambigua* Niessl, Oesterr. Bot. Zeitschr. 28: 97, 1878. – *Preussia ambigua* (Niessl) Ahmad, Mon. Biol. Soc. Pakistan 8: 47, 1978.

SWEDEN. Småland Prov., Oskar par., 1 km S of Lillaverke. 56°37'N
15°50'E.

On old horse dung in moist chamber.

7.VI.1962 leg. Nils Lundqvist (no. 3357-b)

Note. See p. 28

N. LUNDQVIST: FUNGI FIMICOLAE EXSICCATI

115. *Sporormiella leporina* (Niessl) Ahmed & Cain

Can. J. Bot. 50: 447, 1972. – *Sporormia leporina* Niessl, Oesterr. Bot. Zeitschr. 28: 96, 1878. – *Preussia leporina* (Niessl) Arx, Proc. Kon. Nederl. Akad. Wet., Ser. C, 76: 294, 1973. – *Sporormia tuberculata* Griff., Mem. Torrey Bot. Club 11: 112, 1901.

SWEDEN. Uppland Prov., Danmark par., 2 km SE of Flottsund in Lunsen Forest. 59°50'N 17°44'E.

On hare dung (*Lepus*) in moist chamber.

18.V.1964 leg. Nils Lundqvist (no. 4218-c)

N. LUNDQVIST: FUNGI FIMICOLAE EXSICCATI

116. *Sporormiella leporina* (Niessl) Ahmed & Cain

Can. J. Bot. 50: 447, 1972. – *Sporormia leporina* Niessl, Oesterr. Bot. Zeitschr. 28: 96, 1878. – *Preussia leporina* (Niessl) Arx, Proc. Kon. Nederl. Akad. Wet., Ser. C, 76: 294, 1973. – *Sporormia tuberculata* Griff., Mem. Torrey Bot. Club 11: 112, 1901.

SWEDEN. Västmanland Prov., Ängsö par., N of the churchyard. 59°32'N 16°51'E.

On hare dung (*Lepus*) in moist chamber.

24.IV.1965 leg. Ingvar Nordin (no. 2983-d)
det. Nils Lundqvist

N. LUNDQVIST: FUNGI FIMICOLAE EXSICCATI

117. *Sporormiella leporina* (Niessl) Ahmed & Cain

Can. J. Bot. 50: 447, 1972. – *Sporormia leporina* Niessl, Oesterr. Bot. Zeitschr. 28: 96, 1878. – *Preussia leporina* (Niessl) Arx, Proc. Kon. Nederl. Akad. Wet., Ser. C, 76: 294, 1973. – *Sporormia tuberculata* Griff., Mem. Torrey Bot. Club 11: 112, 1901.

SWEDEN. Närke Prov., Hidinge par., Villingsberg gunnery range, NE of Lake Stora Gäddtjärn. 59°14'N 14°52'E. In coniferous forest.

On capercaillie dung (*Tetrao urogallus*) in moist chamber.

4.V.1967 leg. Ingvar Nordin (no. 4310-a)
det. Nils Lundqvist

Note. New substrate. The species is common in Sweden on i.a. droppings of hare and various wild fowl.

N. LUNDQVIST: FUNGI FIMICOLAE EXSICCATI

118. *Sporormiella minima* (Auersw.) Ahmed & Cain

Can. J. Bot. 50: 449, 1972. – *Sporormia minima* Auersw., Hedwigia 7: 66, 1868. – *Sphaeria minima* (Auersw.) Cooke, Fungi Brit. Exs., 2 Ser., No. 567, 1876. – *Preussia minima* (Auersw.) Arx, Proc. Kon. Nederl. Akad. Wet., Ser. C, 76: 294, 1973. – For further synonyms, see Ahmed & Cain in op. cit.

SWEDEN. Öland Prov., Ås par., southern cape of Öland. 56°14'N 16°26'E. In seashore meadow.

On sheep dung in moist chamber.

28.VIII.1959 leg. Nils Lundqvist (no. 2287-c)

N. LUNDQVIST: FUNGI FIMICOLAE EXSICCATI

119. *Sporormiella minima* (Auersw.) Ahmed & Cain

Can. J. Bot. 50: 449, 1972. – *Sporormia minima* Auersw., Hedwigia 7: 66, 1868. – *Sphaeria minima* (Auersw.) Cooke, Fungi Brit. Exs., 2 Ser., No. 567, 1876. – *Preussia minima* (Auersw.) Arx, Proc. Kon. Nederl. Akad. Wet., Ser. C, 76: 294, 1973. – For further synonyms, see Ahmed & Cain in op. cit.

SWEDEN. Bohuslän Prov., Skredsvik par., SE of the parish church. 58°23'N 11°40'E. In pasture.

On cow dung in moist chamber.

6.VIII.1961 leg. Nils Lundqvist (no. 3129-a)

N. LUNDQVIST: FUNGI FIMICOLAE EXSICCATI

120. *Sporormiella pascua* (Niessl) Ahmed & Cain

Can. J. Bot. 50: 454, 1972. – *Sporormia pascua* Niessl, Oesterr. Bot. Zeitschr. 28: 165, 1878. – *Preussia pascua* (Niessl) Valld. & Guarro, Bol. Soc. Micol. Madrid 14: 88, 1990.

SWEDEN. Uppland Prov., Rasbo par., S of Älby. 59°57'N 17°53'E. In pasture.

On old cow dung in moist chamber.

10.V.1960 leg. Nils Lundqvist (no. 2331-a)

N. LUNDQVIST: FUNGI FIMICOLAE EXSICCATI

121. *Sporormiella splendens* (Cain) Ahmed & Cain

Can. J. Bot. 50: 459, 1972. – *Sporormia splendens* Cain, Univ. Toronto Stud., Biol. Ser. 38: 107, 1934. – *Preussia splendens* (Cain) Valld. & Guarro, Bol. Soc. Micol. Madrid 14: 93, 1990. comb. inval.

SWEDEN. Uppland Prov., Danmark par., 2 km SE of Flottsund in Lunsen forest. 59°50'N 17°44'E.

On hare dung (*Lepus*) in moist chamber.

18.V.1964 leg. Nils Lundqvist (no. 4218-a)

N. LUNDQVIST: FUNGI FIMICOLAE EXSICCATI

122. *Sporormiella vexans* (Auersw.) Ahmed & Cain

Can. J. Bot. 50: 473, 1972. – *Sporormia vexans* Auersw., Hedwigia 7: 137, 1868. – *Preussia vexans* (Auersw.) Valld. & Guarro, Bol. Soc. Micol. Madrid 14: 93, 1990, comb. inval.

SWEDEN. Uppland Prov., Skokloster par., Arnö huvud Promontory (5 km NW of the parish church). 59°44'N 17°32'E.

On elk dung (*Alces alces*) in moist chamber.

16.IV.1961 leg. Ingvar Nordin (no. 333-c)
det. Nils Lundqvist

Note. *S. vexans* is a typical "spring species" in the Nordic countries, which is demonstrated by all the four gatherings distributed in the present exsiccata set. The fungus is almost never met with in fresh state in the fall, not even on incubated dung collected at that time.

N. LUNDQVIST: FUNGI FIMICOLAE EXSICCATI

123. *Sporormiella vexans* (Auersw.) Ahmed & Cain

Can. J. Bot. 50: 473, 1972. – *Sporormia vexans* Auersw., Hedwigia 7: 137, 1868. – *Preussia vexans* (Auersw.) Valld. & Guarro, Bol. Soc. Micol. Madrid 14: 93, 1990, comb. inval.

SWEDEN. Västmanland Prov., Ängsö par., N of the churchyard. 59°32'N 16°51'E.

On roe dung (*Capreolus capreolus*).

24.IV.1965 leg. Ingvar Nordin (no. 2984)
det. Nils Lundqvist

Note. See comment on No. 122.

N. LUNDQVIST: FUNGI FIMICOLAE EXSICCATI

124. *Sporormiella vexans* (Auersw.) Ahmed & Cain

Can. J. Bot. 50: 473, 1972. – *Sporormia vexans* Auersw., Hedwigia 7: 137, 1868. – *Preussia vexans* (Auersw.) Valld. & Guarro, Bol. Soc. Micol. Madrid 14: 93, 1990, comb. inval.

SWEDEN. Hälsingland Prov., Färila par., Vallåsen. 61°49'N 15°50'E.

On roe dung (*Capreolus capreolus*) in moist chamber.

12.V.1962 leg. Gunnar Eriksson
det. Nils Lundqvist

Note. See comment on No. 122.

N. LUNDQVIST: FUNGI FIMICOLAE EXSICCATI

125. *Sporormiella vexans* (Auersw.) Ahmed & Cain

Can. J. Bot. 50: 473, 1972. – *Sporormia vexans* Auersw., Hedwigia 7: 137, 1868. – *Preussia vexans* (Auersw.) Valld. & Guarro, Bol. Soc. Micol. Madrid 14: 93, 1990, comb. inval.

HUNGARY. Pest Prov., Mt. Nagyscénás (15 km NW of Budapest). 47°35'N 19°00'E. In deciduous forest.

On fallow deer dung (*Dama dama*) in moist chamber.

30.V.1987 leg. Nils Lundqvist (no. 16625-a)

Note. See comment on No. 122.

Cercophora aggregata* N.Lundq. n. sp.*Fig. 1**

Holotype. Sweden. Medelpad Prov., Borgsjö par., Borgsjö. On horse dung. 30.VIII.1993 leg. Nils Lundqvist no. 19682 (UPS, isotypes as No. 78 in Lundqvist, Fungi Fimic. Exs.).

Perithecia aggregata, in tomento semiimmersa, 700–990 x 580–750 µm, late obpyriformia, collo conico, sulcato, carbonaceo; peridium nigrobrunneum, opacum, leniter areolatum, tristratosum, cellulis externis angulatis, 10–20 µm diam., parietibus crassis. Contentum perithecorum hyalinum. Paraphyses filiforme-ventricosae. Asci 8-spori, anguste clavati, 240–260 x 15–20 µm, sine globulo subapicali; annulus apicalis simplex, 3.5 µm diam, sectione transversa circulari. Sporae 2–3-seriatae, initio cylindricae, unicellulares, sigmoideae, 53–64 (70) x 3.5–5 µm, dein sursum uniseptatae; cellula superior demum brunnea, 17–21 x 8.5–11 µm, ellipsoidea, aequilateralis, laevis, basi truncata, poro germinali excentrice instructa; cellula inferior 35–45 x 3.5–5 µm, hyalina, deorsum geniculata, collabens. Cauda gelatinosa, attenuata, extremitatibus sporae affixa, 27–40 x 2.5–3 µm. Fimicola.

Perithecia aggregated, semiimmersed in a hyphal mat, tomentose, 700–990 x 580–750 µm, broadly obpyriform with conical, sulcate, black, carbonaceous neck; tomentum composed of more or less brown, ramified, septate, 3.5–55.5 µm thick hairs; peridium opaque, black-brown, slightly areolated, 3-layered with angular, thick-walled outer cells, 10–20 µm in diam., and ochraceous to hyaline, tangentially flattened cells, 7–15 µm in diam., in the middle layer. Perithecial contents hyaline. Paraphyses filiform-ventricose. Asci 8-spored, narrowly clavate, 240–260 x 15–20 µm, lacking subapical globulus; apical ring 3.5 µm in diam., simple with circular cross-section. Spores 2–3-seriate, at first hyaline, cylindric, sigmoid, one-celled, 53–64(-70) x 3.5–5 µm, with one series of oil drops, then swelling above becoming transversely uniseptate; upper cell finally brown, 17–21 x 8.5–11 µm, smooth, ellipsoid, equilateral with truncate base and conical apex with excentric germ pore; lower cell 35–45 x 3.5–5 µm, bent at the end, hyaline, collapsing. A lashlike, persistent, gelatinous cauda, 27–40 x 2.5–3 µm attached to both ends of the spores. Fimicolous.

The species is superficially very similar to *Cercophora coprophila* (Fr.:Fr.) N.Lundq., but has darker, more opaque peridium, brown tomentum of rather coarse hairs, simple apical ring in the asci, and may prefer horse dung instead of cow dung. The paratype has somewhat longer necks often covered with a pallid, amorphous substance, which is hardly seen in the

Swedish specimens. This substance is even more characteristic of the gregarious double *Cercophora albicollis* N.Lundq., which, however, differs by its pseudobombardioid peridium and presence of a subapical globulus in the asci. There is also a resemblance to *Cercophora silvatica* N.Lundq., a species mostly on cervid dung with smaller spores. Asci with 5–7 spores are non uncommon in the Swedish material of *C. aggregata*, and such spores tend to be larger than the average.

Further specimens examined: USA, Virginia, Arlington Cemetery, on horse dung, 1926 C.L.Shear 5539 (BPI 60638, UC 1062602, as *Pleurage albicans*).

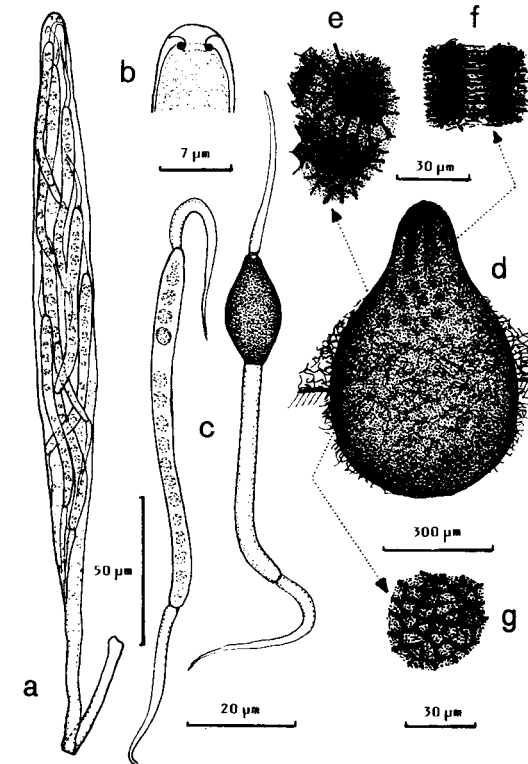


Fig. 1. Holotype of *Cercospora aggregata*. a. Ascus with spores. b. Ascus tip in optical, vertical section. c. Spores. d. Perithecium. e-g. Perithecial surface structures from various parts of the perithecium.

Note to Nos 113 and 114. In Fuckel's material of *Sporormia lageniformis*, which was distributed in Fungi rhenani No. 2270 and subsequently also by Barbey-Boissier as No. 693, two similar *Sporormiellae* are present: one with oblique septa and diagonal germ slits on the spores and another with transverse septa and longitudinal germ slits. The former was later described as *Sporormia ambigua* Niessl, and the latter as *Sporormiella dubia* Ahmed & Cain (Can. J. Bot. 50: 440, 446, 1972).

Cain investigated in 1963 No. 2270, made several slides and found only the species with oblique septa. Accordingly he synonymized *S. ambigua* with *S. lageniformis*. I have also studied this material in Herb. G. There are four pieces of substrate, and on two of them (here called Nos 1 & 2) the species with oblique septa is present. On the other two (here called Nos. 3 & 4) the species with transverse septa is found. Both taxa may be present on all four pieces, but to prove this one may have to make numerous slides. Both species are present also on No. 693, although I found only the first mentioned on the sample in G, and *S. dubia* in UPS.

Cain did not lectotypify *S. lageniformis*, in spite of the fact that he investigated all the material in G. There is no such indication on his labels, nor in Ahmed's and his publication. A lectotypification may throw either *S. ambigua* or *S. dubia* into synonymy. Fuckel's description does not say more than that the spores are "subcurvatis", which fits *S. ambigua*. His poor drawings show both a slightly curved spore with uneven second cell and a straight spore with more symmetrical cells. On the other hand, a spore with oblique septa in lateral view has "transverse" septa when turned 90 degrees. Besides, a spore of the *dubia* kind may also be somewhat curved.

I have chosen to follow Cain's opinion with the following arguments: The species with oblique septa seems to be the most common one on the various pieces and duplicates, and nothing in the protologue contradicts such an interpretation. Ahmed & Cain's publication is very well established. Furthermore, one avoids making a new combination for *S. ambigua* in *Sporormiella*. Therefore, pieces 1 & 2 are herewith selected as lectotype of *S. lageniformis*. I have numbered the pieces and mounted them on cardboard.

Ahmed & Cain (1972) held the opinion that *Sporormia obliquisepta* Speg. is a later synonym of *S. lageniformis*. There is no indication, however, that they saw Spegazzini's type collection (LPS 3552). I have studied this material but not succeeded in finding a species matching Spegazzini's description, which gives asci as 115–130 x 15–16 μm and spores 40 x 7 μm with oblique septa. Oddly enough, a very similar taxon

occurs on No. 3552 with asci 165–180 x 25–27 μm and spores 45–55 x 9–11 μm with oblique septa! Either Spegazzini's measurements are wrong, in which case *S. obliquisepta* is the name for this species, or his measurements are correct and refer to a taxon that may now be missing on the substrate.

Addition and corrections to Fasc. 3

p. 4, No. 60. in Note: K. Lohmeyer read T. Lohmeyer

p. 10. Duplicates of *Hypocopra brefeldii* to MPU, of *Podospora communis* to OSC and of *P. pyriformis* are not documented in my lists and were probably never sent. A duplicate of *Podospora pectinata* is in WELTU.

p. 19, No. 49. A duplicate of *Zygopleurage zygospora* is in NY.

Publication from the Herbarium, University of Uppsala

Nos 1–19. See back cover of *Thunbergia* 4

THUNBERGIA

1. L. Tibell – *Caliciales exsiccatae*, Fasc. 6 (Nos 126–150), 1986.
2. R. Moberg – *Lichenes sel. exs. Upsal.*, Fasc. 1 (Nos 1–25), 1986.
3. R. Santesson – *Fungi lichenic. exs.*, Fasc. 3–4 (Nos 51–100), 1986.
4. O. Constantinescu & R. Moberg – *Computer assistance and some time-saving routines in UPSC culture collection*, 1987.
5. R. Moberg – *Lichenes sel. exs. Upsal.*, Fasc. 2 (Nos 26–50), 1987.
6. R. Santesson – *Fungi lichenic. exs.*, Fasc. 5–6 (Nos 101–150), 1988.
7. R. Moberg – *Lichenes sel. exs. Upsal.*, Fasc. 3 (Nos 51–75), 1989.
8. L. Tibell – *Caliciales exsiccatae*, Fasc. 7 (Nos 151–175), 1989.
9. N. Lundqvist – *Fungi fimicoli exs.*, Fasc. 3 (Nos 51–75), 1989.
10. L. Holm & J.A. Nannfeldt – *Fungi exsiccati Suecici*, Fasc. 67 (Nos 3301–3350), 1990.
11. L. Holm & J.A. Nannfeldt – *Fungi exsiccati Suecici*, Fasc. 68 (Nos 3351–3400), 1990.
12. D.O. Wijnands – *Correct author citation for the species described on material collected by Thunberg in Japan*, 1990.
13. L. Tibell – *Caliciales exsiccatae*, Fasc. 8 (Nos 176–200), 1990.
14. R. Moberg – *Lichenes sel. exs. Upsal.*, Fasc. 4 (Nos 76–100), 1991.
15. O. Constantinescu – *An annotated list of Peronospora names*, 1991.
16. L. Holm & J.A. Nannfeldt – *Fungi exsiccati Suecici*, Fasc. 69 (Nos 3401–3450), 1992.
17. L. Holm & J.A. Nannfeldt – *Fungi exsiccati Suecici*, Fasc. 70 (Nos 3451–3500), 1992.
18. L. Tibell – *Caliciales exsiccatae*, Fasc. 9 (Nos 201–225), 1993.
19. S. Lundqvist & R. Moberg – *The Pehr Kalm Herbarium in UPS, a collection of North American plants*, 1993
20. R. Moberg – *Lich. sel. exs. Upsal.*, Fasc. 5 & 6 (Nos 101–150), 1994.
21. R. Santesson – *Fungi lichenic. exs.*, Fasc. 7 & 8 (Nos 151–200), 1994.
22. R. Santesson – *Fungi lichenic. exs.*, Fasc. 9 & 10 (Nos 201–250), 1994.
23. L. Tibell – *Caliciales exsiccatae*, Fasc. 10 (Nos 226–250), 1996.
24. R. Moberg – *Lich. sel. exs. Upsal.*, Fasc. 7 & 8 (Nos 151–200), 1996.

Published January 29th, 1997

ISSN-0283-2275

Repro HSC, Uppsala 1997